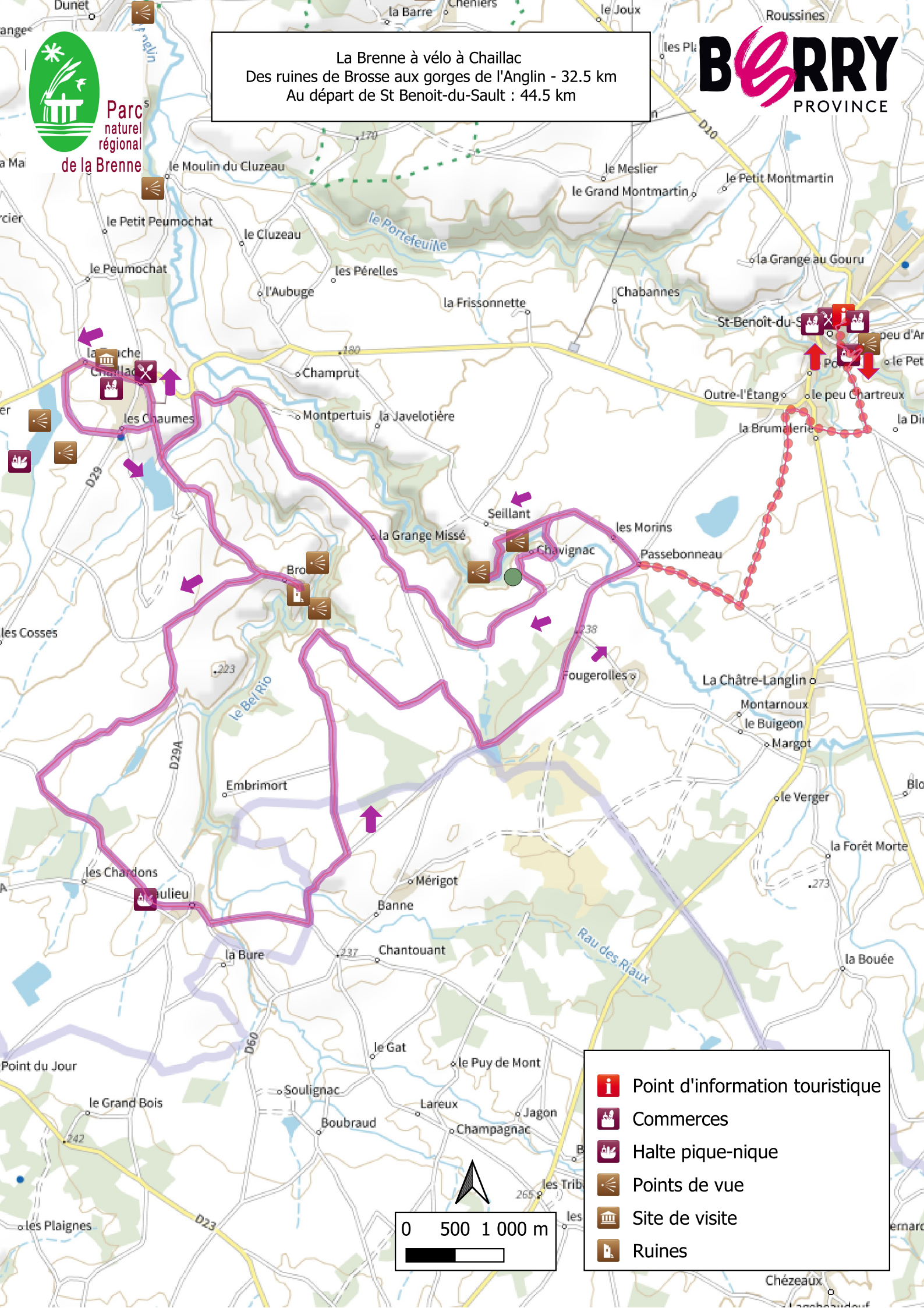










Parc  
naturel  
régional  
de la Brenne

La Brenne à vélo à Chaillac  
Des ruines de Brosse aux gorges de l'Anglin - 32.5 km  
Au départ de St Benoit-du-Sault : 44.5 km

**BERRY**  
PROVINCE



-  Point d'information touristique
-  Commerces
-  Halte pique-nique
-  Points de vue
-  Site de visite
-  Ruines

